

Touchdown



The Westland & Yeovil District Aeromodellers newsletter February - 2013

Bearley field

Access – The flying field and lane have shown themselves to be flood proof. However...

Grass – The field is very soggy, be sure to wear wellington boots or similar.

Frequencies – There is a small group flying from a field about a mile away, so to avoid frequency clashes on 35MHz, we have agreed to use only channels 64 and above, while they use channels 62 and below.

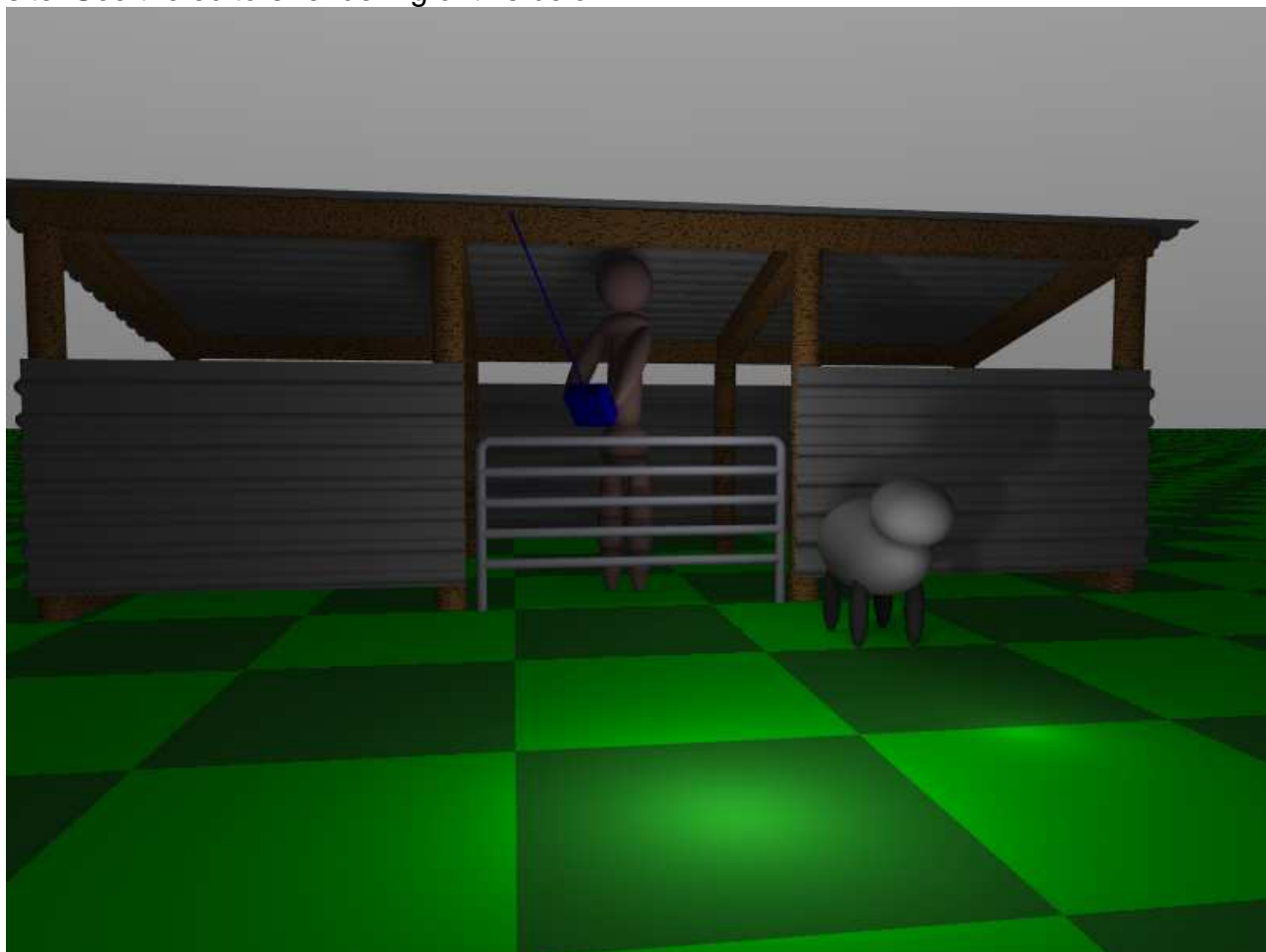
Parking – Currently only the all weather parking is usable, and we sometimes run out of space, so park closely (but without contact of course)

Peg Board and trowel – This is stored in the hedge by the final gate to the field.

Event Shelter

The idea of an event shelter at Bearly has been largely superseded by a proposed sheep / flyer shelter. The idea is a wooden frame with partially open walls of corrugated sheet.

The exact positioning is undecided, and it will be suitable for livestock should we leave the site. See the editors rendering of this below.



Touchdown



Other photos

Chris is feeling very proud of successfully landing his alpha 60, and the Editor is flying recon with a 720HD video camera (image is a grab of Bearley lane and our car park) :-



Regular Indoor flying (2 hours on 1st and 3rd Mondays each month)

The editor has organised regular indoor flying events, at Crewkerne Sports centre.

- **Generally 1st & 3rd Mondays each month** until at least April.
- 2 hours 7pm to 9pm
- Maximum cost now £5/hour
- Juniors half price

See Indoor flying Posters in the newsletter archive.

Newsletter distribution

This newsletter is meant to be for all members, but currently I just post a copy on the web and email every-one; this means people not on the net don't get to see it. I also print a few copies, to bring to club meetings and the flying patch.

Does any one have a better way of doing this (apart for letter post which we can't afford)?

Please ask me if you prefer a paper copy.

Websites & Contacts

Clubs	
Blackmore R/C FC	http://sites.google.com/site/blackdownrcfc/
Bristol Model engineers	http://www.bristolmodelengineers.co.uk/
BMFA (our entry)	http://www.bmfa.org/links/Model_Clubs_UK/index-14.html
Ilminster R/C club	http://www.ilminster.net/
Model Engineers	www.communicate.co.uk/twc/yeovilmodelengineers
New website	http://myweb.tiscali.co.uk/westlandaeromodeller
Newsletter archive	http://www.home9999.plus.com/WHLMAC/news.htm .
Fields / slopes	
Corton Denham	http://www.streetmap.co.uk/map.srf?X=363300&Y=123400&A=Y&Z=120
Westlands	http://www.streetmap.co.uk/map.srf?X=353300&Y=115755&A=Y&Z=115
White Sheet	http://www.artemisdriving.co.uk/whitesheet/index.htm
Bearley (near Tintinhull)	http://maps.google.co.uk/maps/ms?hl=en&ie=UTF8&msa=D&msid=11370404768590907589.0004742ce6b09714a030b&ll=50.982965,-2.720425&spn=0.0062,0.019205&t=h&z=16
Crewkerne Sports Hall	http://www.somerset.gov.uk/somerset/communityliving/leisurecentres/directory/details.cfm?ID=6

Touchdown



Simulators	
Aerofly	http://www.aerofly.de/
FMS	http://fms.pathbot.com/
Shows	
Eastnor Castle	http://www.eastnorcastle.com/special_events.aspx
Much Marcle	http://www.largemodelassociation.com/eventcalendar.htm
Woodspring	http://www.woodspringwings.co.uk/shows.html
Bristol Model Engineers	http://bristolmodelengineers.co.uk/exhib/exhib.htm
Ezone	http://www.ezonemag.com/
Event shelter	http://www.coleman.eu/uk/p-23473-event-shelter-15-x-15.aspx

Articles, cartoons, notices, better photos & other contributions

If any of you have anything interesting, amusing or informative that you would like to share in the newsletter please send it to me, by e-mail is best (my address can be found here :- <http://www.home9999.plus.com/contact.html>). But any material will be gratefully accepted, at monthly meeting, or on the field. I can also be contacted on 01935 445311 or 01935 823409.

Flying Times

The permitted flying times are subject to common sense and courtesy :-

Day	Notes	Merriott field	Westland's aerodrome ¹	Bearley ⁵
Monday	78dBa or less	Closed	18:00-20:30 ²	09:30-20:00 ²
Tuesday			Evenings ²	
Wednesday	Summer only		17:00-20:30 ²	
Thursday			Evenings ²	
Friday			Evenings ²	
Sat & Bank Holidays			12:00-sunset	09:30-13:30
Sunday			09:30-13:30 ⁴	
Any	Silent flight ³		All day	

Note :-

¹ When closed to full sized aircraft.

² Flying should cease at sunset on either site.

³ NOT all electric models are silent, please be considerate.

⁴ Helicopter's only.

⁵ Channels 64 upwards only on 35MHz (no limitations on 2.4GHz)